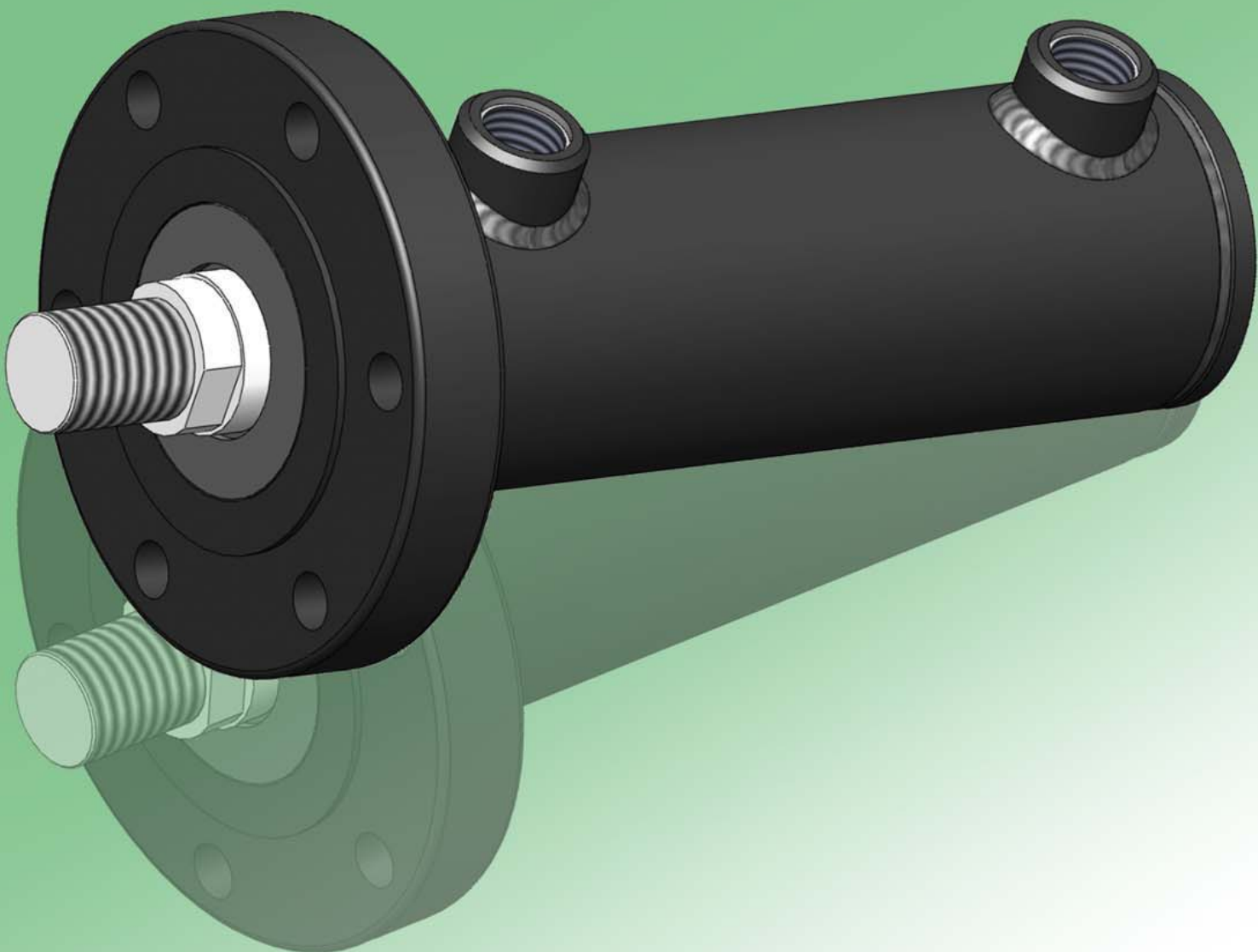


# SERIE CHR

## Cilindros Hidráulicos *Hydraulic Cylinders*

Presión de trabajo 160 bar  
Working pressure 160 bar



**ESPERIA S.A.**

# ÍNDICE

## INDEX

	Pág./Page
- Índice / <i>Index</i> .....	2
- Características / <i>Specifications</i> .....	3
- Diámetros y secciones / <i>Diameters and cross sections</i> .....	3
- Tipos de sujeción / <i>Mounting Type</i> .....	4
- Código de pedido / <i>Ordering code</i> .....	5
- Lista de materiales y sujeciones / <i>Parts list and mounting brackets</i> .....	6
- Recambios de Juntas / <i>Seals Kit</i> .....	7
- Modelo CHR Sujeción BN / <i>Model CHR Mounting BN</i> .....	8
- Modelo CHR Sujeción BD / <i>Model CHR Mounting BD</i> .....	9
- Modelo CHR Sujeción BT / <i>Model CHR Mounting BT</i> .....	10
- Modelo CHR Sujeción BC / <i>Model CHR Mounting BC</i> .....	11
- Modelo CHR Sujeción BCR / <i>Model CHR Mounting BCR</i> .....	12
- Modelo CHR Sujeción BM / <i>Model CHR Mounting BM</i> .....	13
- Modelo CHR Sujeción BP / <i>Model CHR Mounting BP</i> .....	14
- Modelo CHR Doble Vástago DV / <i>Model CHR Double Rod DV</i> .....	15
- Modelo especial reforzado CHR-E / <i>CHR-E Reinforced Special Model</i> .....	16
- Horquilla delantera con Rótula (modelo R) / <i>Front Spherical Eye Clevis (model R)</i> .....	18
- Arrastrador macho (modelo M) / <i>Rod End Plain Eyes (model M)</i> .....	19
- Horquilla delantera (modelo H) / <i>Front Rod Clevis (model H)</i> .....	20

**CARACTERÍSTICAS, DIÁMETROS Y SECCIONES**  
**SPECIFICATIONS, DIAMETERS, AND CROSS-SECTIONS**

<b>Camisa</b> <i>Sleeve</i>	Tubo Lapeado H-8 calidad ST-52 (DIN 2391) <i>Lapped tube, H-8, ST-52 quality (DIN 2391)</i>									
<b>Vástago</b> <i>Rod</i>	Acero cromado (f7) <i>Chromium Plated Steel, (f7)</i>									
<b>Fijaciones</b> <i>Mounting</i>	BN - BD - BT - BC - BCR - BM - BP									
<b>Velocidad</b> <i>Speed</i>	0,5 a 2m/s (Según el tipo de junta seleccionado) <i>0,5 to 2 m/s (According to the seal kit selected)</i>									
<b>Temperatura</b> <i>Temperature</i>	-20° C ... + 80° C +T <sup>a</sup> a pedido/ +T <sup>a</sup> on request									
<b>Presión</b> <i>Pressure</i>	Mínima de trabajo 15 bar / Máxima de trabajo 160 bar <i>Minimum working pressure: 15 bar / Maximum working pressure 160 bar</i>									
<b>DIÁMETROS</b> <i>DIAMETERS</i>	<b>32</b>	<b>40</b>	<b>50</b>	<b>63</b>	<b>80</b>	<b>100</b>	<b>125</b>	<b>160</b>	<b>200</b>	<b>250</b>
<b>Sección Total</b> <i>Total cross-section</i>	8,04	12,56	19,63	31,17	50,26	78,35	122,7	201	314,1	490,8
<b>VÁSTAGO</b> <i>ROD</i>	16	22	28	36	45	56	70	90	110	140
<b>SECCIÓN</b> <i>CROSS-SECTION</i>	2,01	3,80	6,15	10,17	15,9	24,63	38,48	63,61	95,03	153,9
<b>Sección Anular</b> <i>Annular cross-section</i>	6,03	8,76	13,48	21	34,36	53,90	84,23	137,4	219,1	336,97

<b>VÁSTAGO REFORZADO</b> <i>REINFORCED ROD</i>	-	<b>28</b>	<b>36</b>	<b>45</b>	<b>56</b>	<b>70</b>	<b>90</b>	<b>110</b>	<b>140</b>	<b>180</b>
<b>Sección Vástago</b> <i>Rod cross-section</i>	-	6,15	10,17	15,90	24,63	38,48	63,61	95,03	153,9	254,47
<b>Sección Anular</b> <i>Annular cross-section</i>	-	6,41	9,46	15,27	25,63	40,05	59,10	106,03	160,26	236,40
<b>Conexiones rosca GAS</b> <i>GAS thread connections</i>	1/4"	3/8"	3/8"	1/2"	1/2"	3/4"	3/4"	1"	1-1/4"	1-1/4"

## TIPOS DE SUJECIÓN - MOUNTING TYPE

### BN

ver página 8  
see page 8



### BD

ver página 9  
see page 9



### BT

ver página 10  
see page 10



### BC

ver página 11  
see page 11



### BCR

ver página 12  
see page 12



### BM

ver página 13  
see page 13



### BP

ver página 14  
see page 14



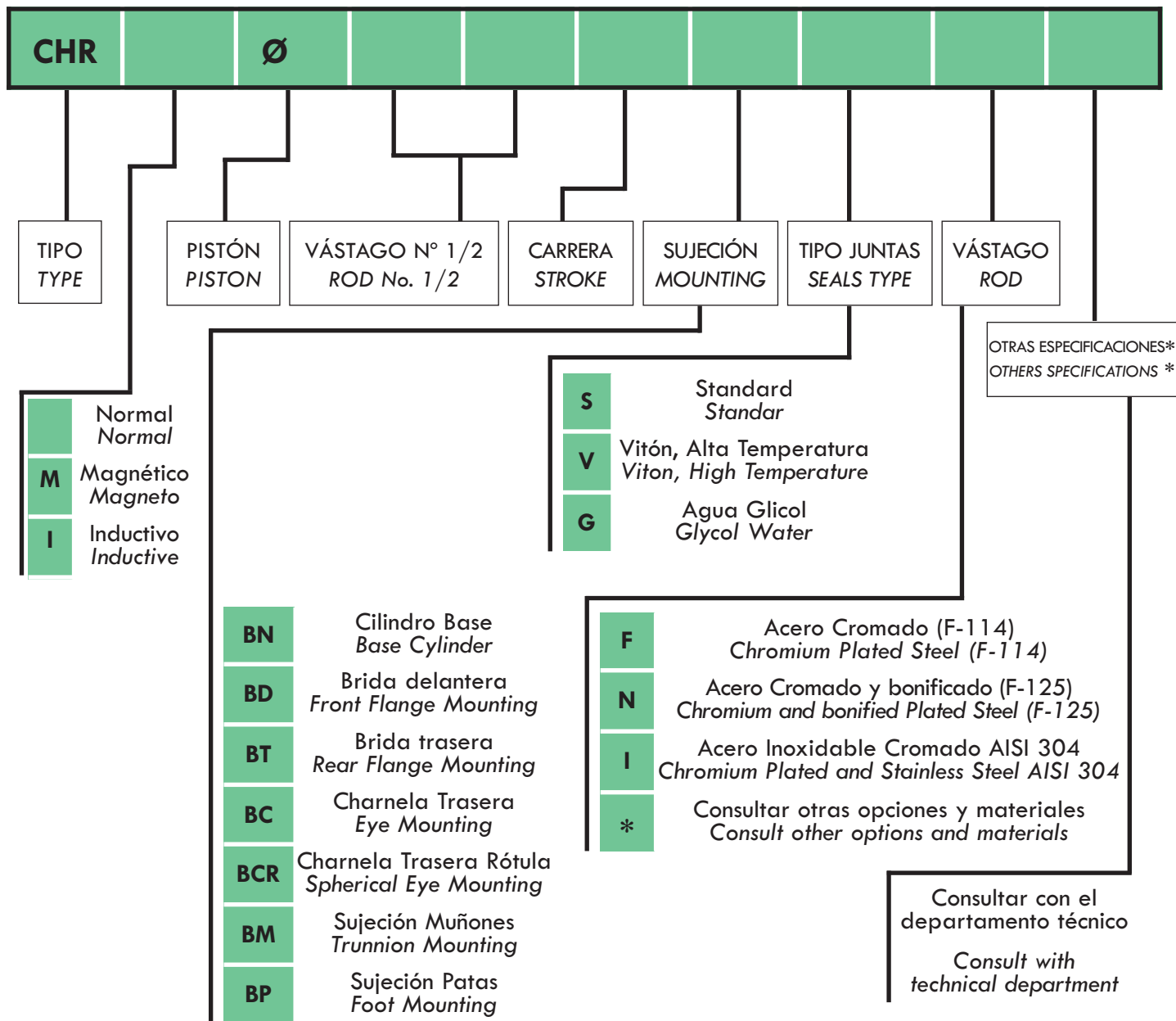
### DV

ver páginas 15  
see pages 15



Disponible en todas las versiones excepto BC y BCR  
Available in all mountings except BC and BCR

**CÓDIGO DE PEDIDO - ORDERING CODE**

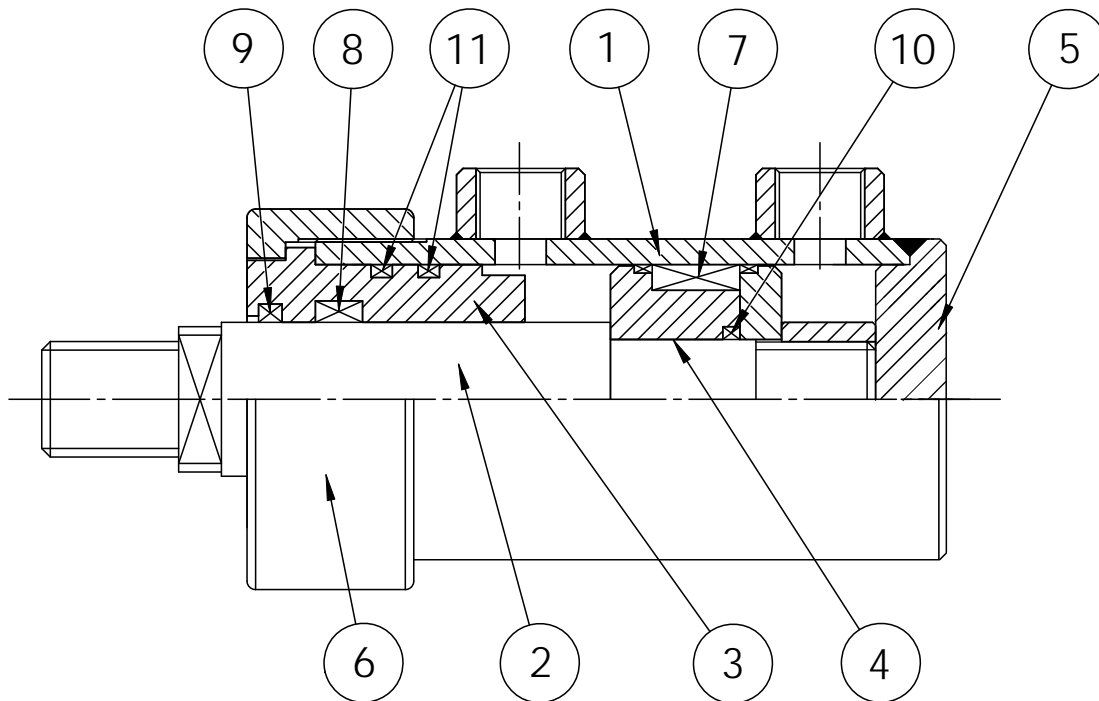


**Ejemplos - Examples:**

CHR Ø63/36x300 BD S F (Simple vástago-Simple Rod)

CHR Ø63/36/36x300 BD S F (Doble vástago-Double Rod)

## LISTA DE MATERIALES Y SUJECIONES PART LIST AND MOUNTING BRACKETS

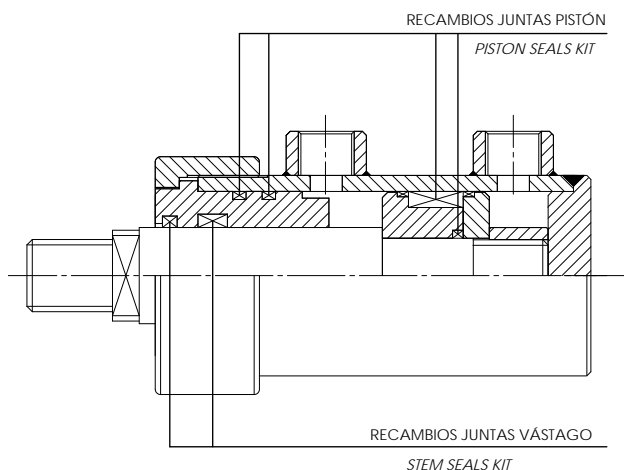


N° No.	Denominación Name	Material Material
1	Camisa Sleeve	ST-52 DIN 2448/1629
2	Vástago Rod	Acero Cromado Chromium Plated Steel
3	Guía Vástago Rod Guide	Fundición Cast
4	Pistón Piston	Acero Steel
5	Tapa Trasera Rear cover	Acero Steel
6	Tuerca Delantera Front Nut	Acero Steel
7	Junta Pistón Piston Seal	Acrilnitrilo butadileno Acrylonitrile butadiene
8	Junta Vástago Rod Seal	Poliuretano Polyurethane
9	Rascador Scraper	Poliuretano Polyurethane
10	Junta tórica OR O-ring	Goma nitrilica Nitrile Ruber
11	Junta tórica OR O-ring	Goma nitrilica Nitrile Ruber

SUJECIONES / MOUNTING	
<b>BN</b>	Cilindro Base Base Cylinder
<b>BD</b>	Brida Delantera Front Flange
<b>BT</b>	Brida Trasera Rear Flange
<b>BC</b>	Charnela Trasera Cap Fixed
<b>BCR</b>	Charnela Rótula Cap fixed eyed with spherical bearing
<b>BM</b>	Muñones Trunnion
<b>BP</b>	Patas Slide Lugs
<b>BN-DV</b>	Cilindro Base - Doble Vástago Base Cylinder - Double Rod
<b>BD-DV</b>	Brida Delantera - Doble Vástago Front Flange - Double Rod
<b>BT-DV</b>	Brida Trasera - Doble Vástago Rear Frange - Double Rod
<b>BM-DV</b>	Muñones - Doble Vástago Trunnion - Double Rod
<b>BP-DV</b>	Patas - Doble Vástago Slide Lugs - Double Rod

**RECAMBIOS DE JUNTAS**  
**SEALS KIT**

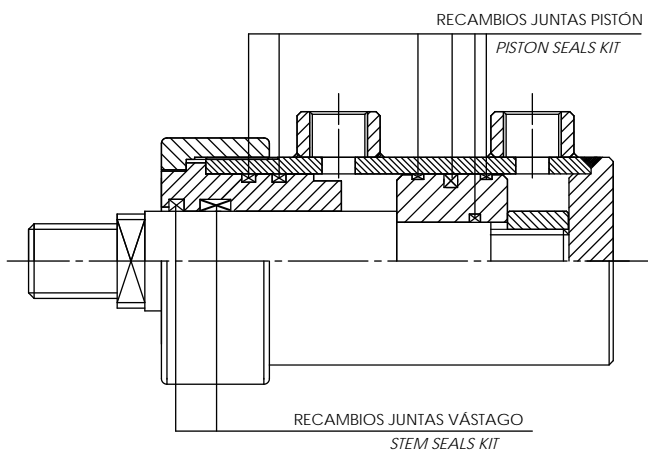
**NORMAL**  
**STANDARD**



TIPO / TYPE CHR	Ø VASTAGO ROD	NORMAL STANDARD
		REF. JUEGO JUNTAS SEALS KIT REFER.
CHR-32	16	JCHR3216N
CHR-40	22	JCHR4022N
	28	JCHR4028N
CHR-50	28	JCHR5028N
	36	JCHR5036N
CHR-63	36	JCHR6336N
	45	JCHR6345N
CHR-80	45	JCHR8045N
	56	JCHR8056N
CHR-100	56	JCHR10056N
	70	JCHR10070N
CHR-125	70	JCHR12570N
	90	JCHR12590N
CHR-160	90	JCHR16090N
	110	JCHR160110N
CHR-200	110	JCHR200110N
	140	JCHR200140N
CHR-250	140	JCHR250140N
	180	JCHR250180N

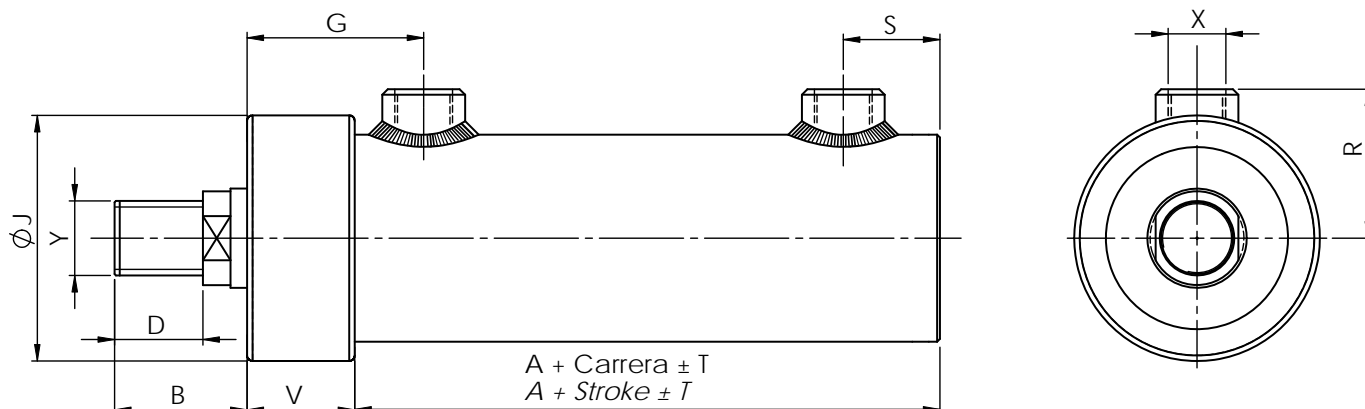
**ALTA TEMPERATURA**  
**HIGH TEMPERATURE**

**AGUA GLICOL**  
**GLYCOL WATER**



TIPO / TYPE CHR	Ø VASTAGO ROD	ALTA TEMPERATURA HIGH TEMPERATURE	AGUA GLICOL GLYCOL WATER
		REF. JUEGO JUNTAS SEALS KIT REFER.	REF. JUEGO JUNTAS SEALS KIT REFER.
CHR-32	16	JCHR3216V	JCHR3216G
CHR-40	22	JCHR4022V	JCHR4022G
	28	JCHR4028V	JCHR4028G
CHR-50	28	JCHR5028V	JCHR5028G
	36	JCHR5036V	JCHR5036G
CHR-63	36	JCHR6336V	JCHR6336G
	45	JCHR6345V	JCHR6345G
CHR-80	45	JCHR8045V	JCHR8045G
	56	JCHR8056V	JCHR8056G
CHR-100	56	JCHR10056V	JCHR10056G
	70	JCHR10070V	JCHR10070G
CHR-125	70	JCHR12570V	JCHR12570G
	90	JCHR12590V	JCHR12590G
CHR-160	90	JCHR16090V	JCHR16090G
	110	JCHR160110V	JCHR160110G
CHR-200	110	JCHR200110V	JCHR200110G
	140	JCHR200140V	JCHR200140G
CHR-250	140	JCHR250140V	JCHR250140G
	180	JCHR250180V	JCHR250180G

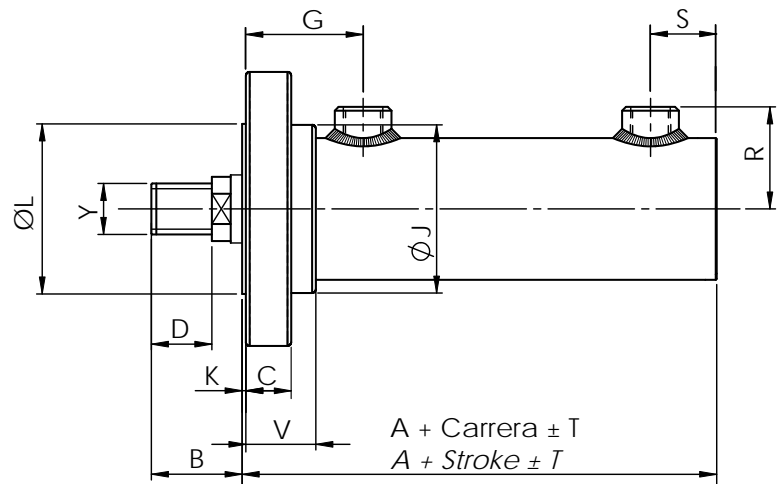
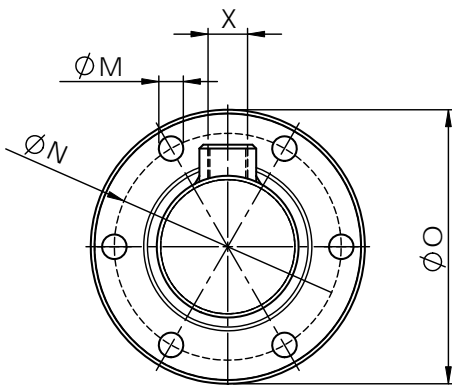
## CHR - FIJACIÓN BN CHR - MOUNTING BN



TIPO / TYPE CHR	X	Y	A	B	D	G	J	R	S	T	V
Ø32 16	1/4" G	M12x1,25	106	30	16	50	52	31	26	2	32
Ø40 22 28	3/8" G	M16x1,5	126	35	20	62	62	39	25	2	40
Ø50 28 36	3/8" G	M20x1,5	136	41	25	64	74	44	29	2	41
Ø63 36 45	1/2" G	M27x2	149	48	32	64	89	54	35	2	39
Ø80 45 56	1/2" G	M33x2	168	59	40	74	112	65	40	2	46
Ø100 56 70	3/4" G	M42x2	189	70	50	84	135	77	45	3	52
Ø125 70 90	3/4" G	M52x2	203	80	55	88	170	92	57	3	53
Ø160 90 110	1" G	M68x3	255	100	70	112	218	118	72	3	67
Ø200 110 140	1-1/4" G	M90x3	297	125	90	127	272	145	90	3	80
Ø250 140 180	1-1/4" G	M110x3	338	150	110	155	335	174	103	4	105



CHR - SUJECIÓN BD  
CHR - MOUNTING BD

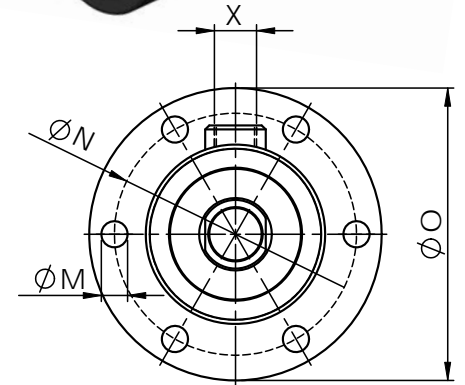
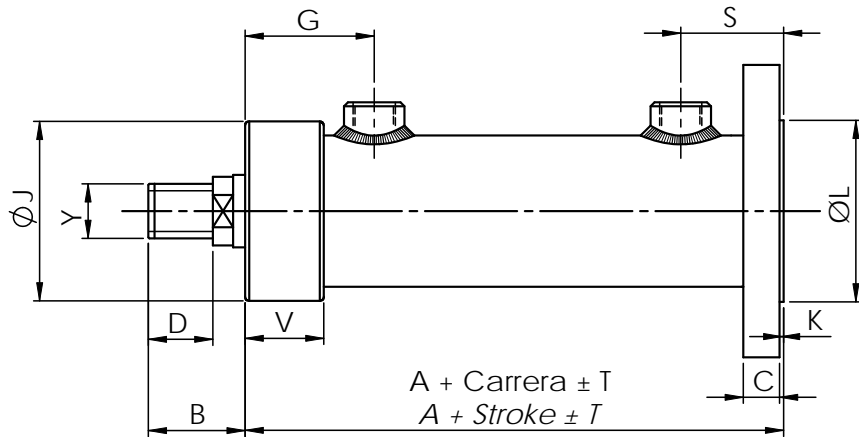


TIPO / TYPE CHR	X	Y	A	B	C	D	G	J	K	L	M	N	O	R	S	T	V
Ø32 16	1/4" G	M12x1,25	106	30	15	16	48	52	2	52	7	67	80	31	26	2	32
Ø40 22 28	3/8" G	M16x1,5	126	35	17	20	60	62	2	60	9	82	100	39	25	2	40
Ø50 28 36	3/8" G	M20x1,5	136	41	20	25	62	74	2	75	11	103	125	44	29	2	41
Ø63 36 45	1/2" G	M27x2	149	48	24	32	62	89	2	90	13	120	145	54	35	2	39
Ø80 45 56	1/2" G	M33x2	168	59	28	40	72	112	2	110	15	142	170	65	40	2	46
Ø100 56 70	3/4" G	M42x2	189	70	34	50	81	135	3	135	17	170	202	77	45	3	52
Ø125 70 90	3/4" G	M52x2	203	80	40	55	85	170	3	168	21	210	250	92	57	3	53
Ø160 90 110	1" G	M68x3	255	100	54	70	109	218	3	215	29	270	320	118	72	3	67
Ø200 110 140	1-1/4" G	M90x3	297	125	65	90	124	272	3	270	32	330	385	145	90	3	80
Ø250 140 180	1-1/4" G	M110x3	338	150	65	110	150	335	5	330	29	390*	440	174	103	4	105

\*El cilindro serie CHR 250 lleva 12 taladros equidistantes 'M' en lugar de 6

\*The CHR 250 serie cylinder has 12 equidistant holes 'M' instead of 6.

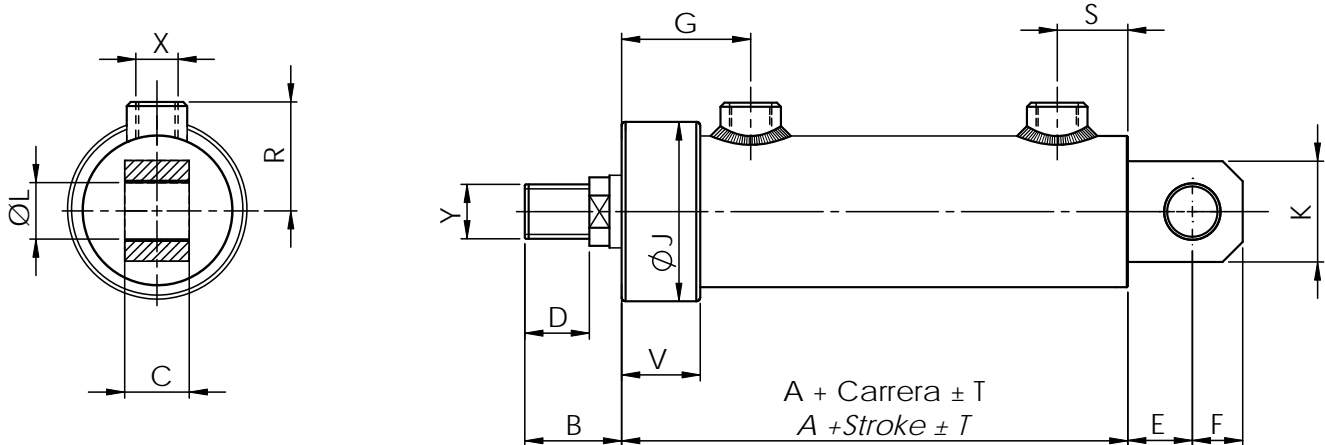
## CHR - SUJECIÓN BT CHR - MOUNTING BT



TIPO / TYPE CHR	X	Y	A	B	C	D	G	J	K	L	M	N	O	R	S	T	V	
Ø32	16	1/4" G	M12x1,25	110	30	10	16	50	52	2	52	7	67	80	31	30	2	32
Ø40	22 28	3/8" G	M16x1,5	133	35	13	20	62	62	2	60	9	82	100	39	32	2	40
Ø50	28 36	3/8" G	M20x1,5	144	41	15	25	64	74	2	75	11	103	125	44	39	2	41
Ø63	36 45	1/2" G	M27x2	157	48	18	32	64	89	2	90	13	120	145	54	43	2	39
Ø80	45 56	1/2" G	M33x2	178	59	22	40	74	112	2	110	15	142	170	65	50	2	46
Ø100	56 70	3/4" G	M42x2	197	70	25	50	84	135	3	135	17	170	202	77	53	3	52
Ø125	70 90	3/4" G	M52x2	210	80	30	55	88	170	3	168	21	210	250	92	64	3	53
Ø160	90 110	1" G	M68x3	263	100	38	70	112	218	3	215	29	270	320	118	80	3	67
Ø200	110 140	1-1/4" G	M90x3	299	125	42	90	127	272	3	270	32	330	385	145	92	3	80
Ø250	140 180	1-1/4" G	M110x3	345	150	55	110	155	335	5	330	29	390*	440	174	110	4	105

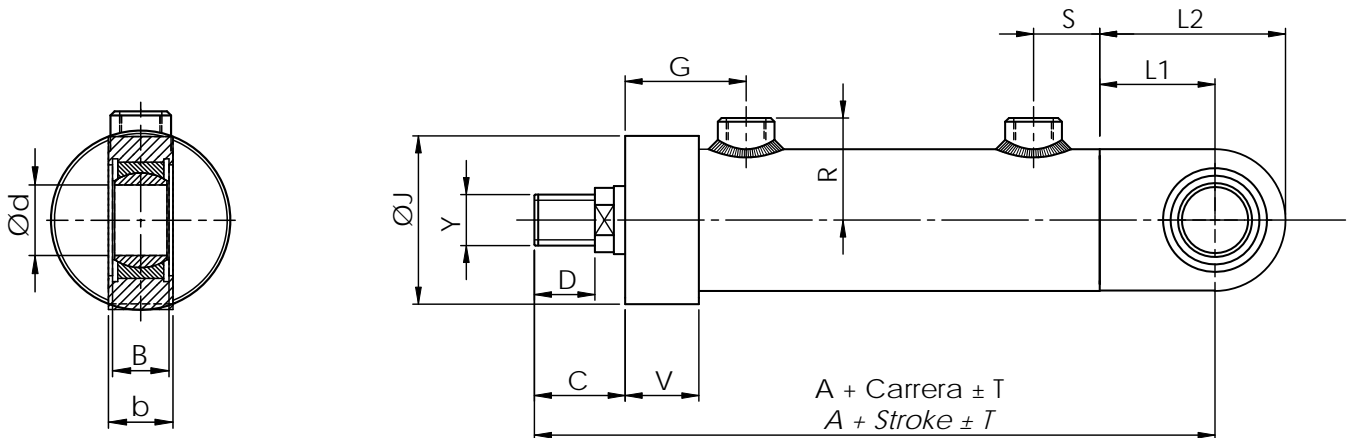
\*El cilindro serie CHR 250 lleva 12 taladros equidistantes 'M' en lugar de 6 - The CHR 250 serie cylinder has 12 equidistant holes 'M' instead of 6.

**CHR - SUJECIÓN BC**  
**CHR - MOUNTING BC**



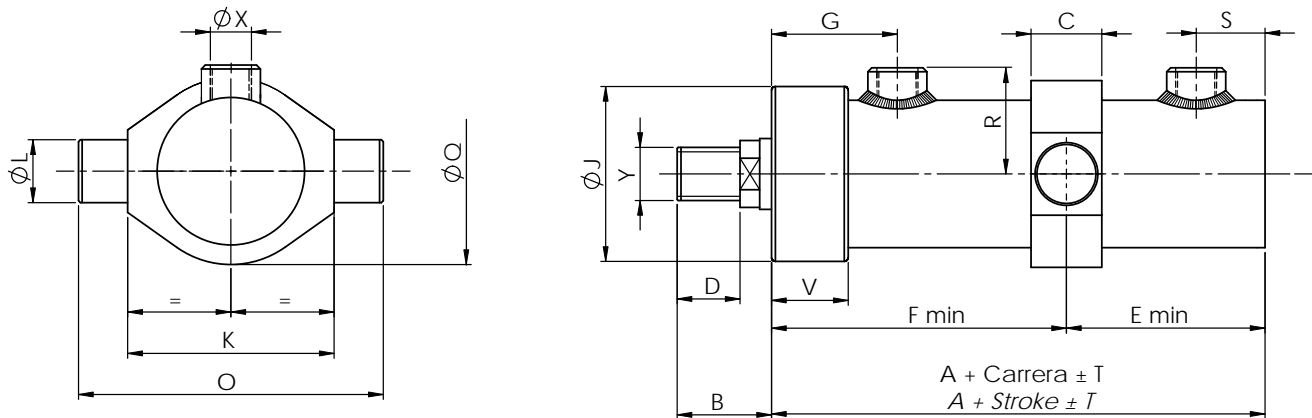
TIPO / TYPE CHR	X	Y	A	B	C	D	E	F	G	J	K	L	R	S	T	V
Ø32 16	1/4" G	M12x1,25	106	30	16	16	20	13	50	52	26	12	31	26	2	32
Ø40 22 28	3/8" G	M16x1,5	126	35	20	20	25	16	62	62	32	16	39	25	2	40
Ø50 28 36	3/8" G	M20x1,5	136	41	25	25	28	20	64	74	40	20	44	29	2	41
Ø63 36 45	1/2" G	M27x2	149	48	32	32	32	25	64	89	50	25	54	35	2	39
Ø80 45 56	1/2" G	M33x2	168	59	40	40	45	32	74	112	64	32	65	40	2	46
Ø100 56 70	3/4" G	M42x2	189	70	50	50	55	40	84	135	80	40	77	45	3	52
Ø125 70 90	3/4" G	M52x2	203	80	60	55	65	50	88	170	100	50	92	57	3	53
Ø160 90 110	1" G	M68x3	255	100	80	70	75	63	112	218	126	63	118	72	3	67
Ø200 110 140	1-1/4" G	M90x3	297	125	100	90	95	80	127	272	160	80	145	90	3	80
Ø250 140 180	1-1/4" G	M110x3	338	150	120	110	130	100	155	335	200	100	174	103	4	105

## CHR - SUJECIÓN BCR CHR - MOUNTING BCR



TIPO / TYPE	Ø Interior	X	Y	Ød	A	B	b	C	D	G	J	L1	L2	R	S	V	
Ø32	16 -	32	1/4" G	M12x1,25	20	174	16	19	30	16	50	52	38	63	31	26	32
Ø40	22 28	40	3/8" G	M16x1,5	25	206	20	28	35	20	62	62	45	73	39	25	40
Ø50	28 36	50	3/8" G	M20x1,5	30	228	22	28	41	25	64	74	51	83	44	29	41
Ø63	36 45	63	1/2" G	M27x2	35	258	25	30	48	32	64	89	61	100	54	35	39
Ø80	45 56	80	1/2" G	M33x2	40	296	28	35	59	40	74	112	69	116	65	40	46
Ø100	56 70	100	3/4" G	M42x2	50	347	35	40	70	50	84	135	88	146	77	45	52
Ø125	70 90	125	3/4" G	M52x2	60	383	44	50	80	55	88	170	100	165	92	57	53
Ø160	90 110	160	1" G	M68x3	80	496	55	60	100	70	112	218	141	229	118	72	67
Ø200	110 140	200	1-1/4" G	M90x3	100	567	70	70	125	90	127	272	145	270	145	90	80
Ø250	140 180	250	1-1/4" G	M110x3	110	653	70	80	150	110	155	335	165	310	174	103	105

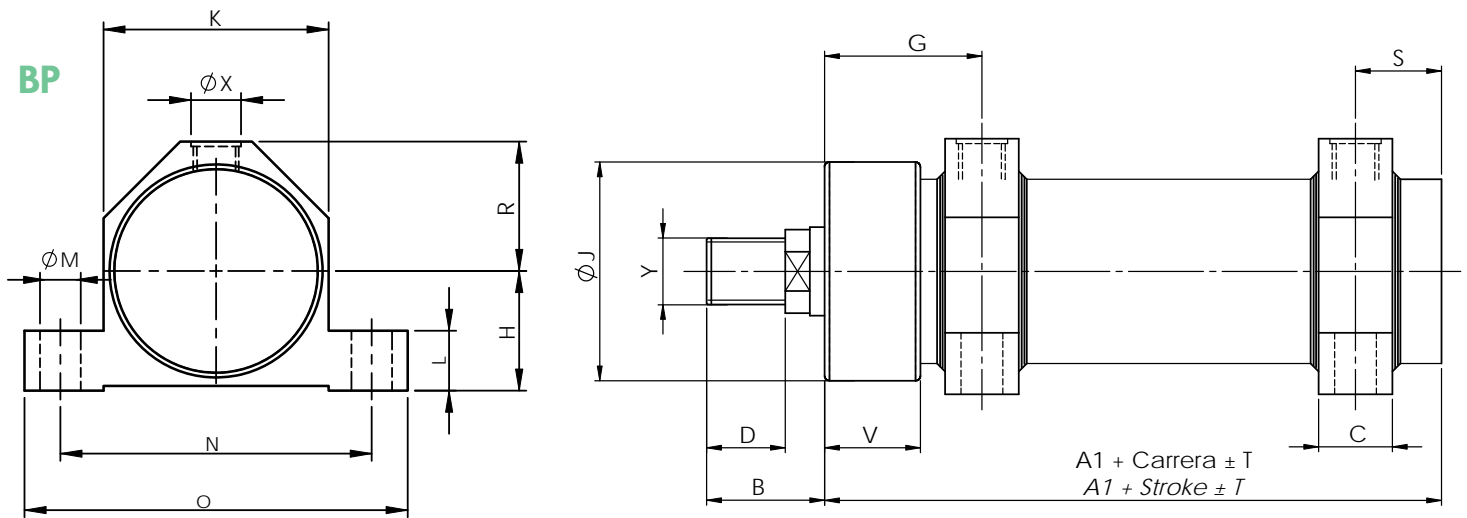
**CHR - SUJECIÓN BM**  
**CHR - MOUNTING BM**



ØCILINDRO - Ø CYLINDER	32	40	50	63	80	100	125	160	200	250
<b>Carrera mínima - Minimum stroke</b>	36	37	39	44	42	56	72	85	112	134

TIPO / TYPE CHR	X	Y	A	B	C	D	E	F	G	J	K	L	O	Q	R	S	T	V	
Ø32	16 -	1/4" G	M12x1,25	106	30	20	16	59	83	50	52	56	16	80	54	31	26	2	32
Ø40	22 28	3/8" G	M16x1,5	126	35	24	20	63	100	62	62	70	20	102	65	39	25	2	40
Ø50	28 36	3/8" G	M20x1,5	136	41	30	25	70	105	64	74	85	25	125	80	44	29	2	41
Ø63	36 45	1/2" G	M27x2	149	48	36	32	82	111	64	89	105	32	155	95	54	35	2	39
Ø80	45 56	1/2" G	M33x2	168	59	36	40	88	122	74	112	125	32	175	120	65	40	2	46
Ø100	56 70	3/4" G	M42x2	189	70	45	50	103	142	84	135	156	40	220	145	77	45	3	52
Ø125	70 90	3/4" G	M52x2	203	80	55	55	118	150	88	170	190	50	270	174	92	57	3	53
Ø160	90 110	1" G	M68x3	255	100	70	70	146	187	112	218	250	63	350	236	118	72	3	67
Ø200	110 140	1-1/4" G	M90x3	297	125	90	90	178	223	127	272	300	80	426	290	145	90	3	80
Ø250	140 180	1-1/4" G	M110x3	338	150	110	110	210	257	155	335	360	100	520	345	174	103	4	105

## CHR - SUJECIÓN BP CHR - MOUNTING BP



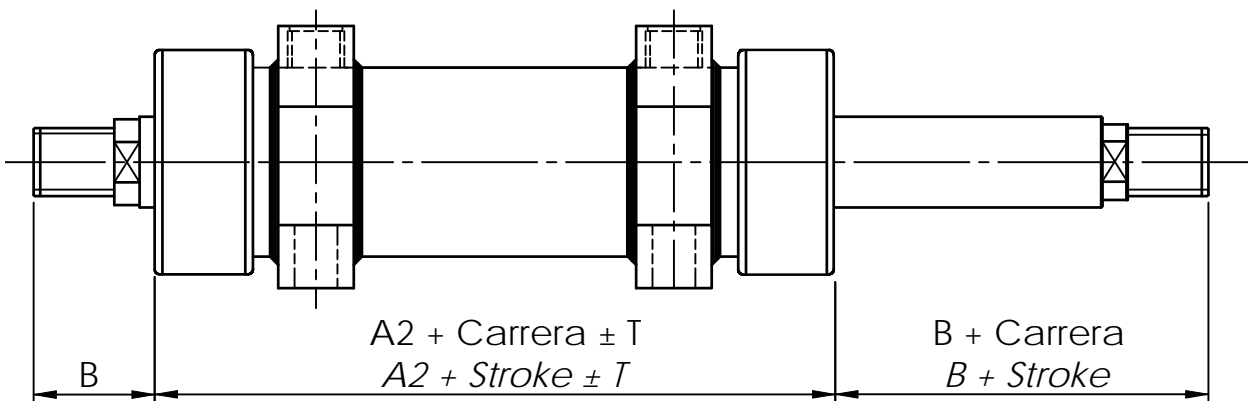
TIPO/TYPE CHR	X	Y	A <sub>1</sub>	B	C	D	G	H	J	K	L	M	N	O	R	S	T	V
Ø32 16	1/4" G	M12x1,25	106	30	20	16	50	28	52	52	16	11	75	95	31	26	2	32
Ø40 22 28	3/8" G	M16x1,5	126	35	25	20	62	35	62	65	20	13	94	118	39	25	2	40
Ø50 28 36	3/8" G	M20x1,5	136	41	25	25	64	40	74	76	20	15	105	130	44	29	2	41
Ø63 36 45	1/2" G	M27x2	149	48	30	32	64	50	89	94	25	17	130	160	54	35	2	39
Ø80 45 56	1/2" G	M33x2	168	59	35	40	74	62	112	116	28	19	160	195	65	40	2	46
Ø100 56 70	3/4" G	M42x2	189	70	40	50	84	73	135	140	32	23	185	225	77	45	3	52
Ø125 70 90	3/4" G	M52x2	203	80	44	55	88	88	170	170	36	25	220	265	90	57	3	53
Ø160 90 110	1" G	M68x3	255	100	58	70	112	115	218	224	45	35	295	355	118	72	3	67
Ø200 110 140	1-1/4" G	M90x3	297	125	68	90	130	140	272	275	55	41	355	425	145	90	3	80
Ø250 140 180	1-1/4" G	M110x3	338	150	78	110	155	175	335	335	65	47	425	510	175	105	4	105

**CHR DOBLE VÁSTAGO DV**

Los cilindros de doble vástago son posibles en los siguientes tipos de montaje; BP, BD y BM.

**CHR DOUBLE ROD DV**

The double rod cylinders can be mountings BP, BD and BM.



ØCAMISA BORE Ø	32	40	50	63	80	100	125	160	200	250
<b>A2</b>	129	159	168	170	190	212	222	277	318	375
<b>B</b>	30	35	41	48	59	70	80	100	125	150
<b>T</b>	2	2	2	2	2	3	3	3	3	4

## MODELO ESPECIAL REFORZADO REINFORCED SPECIAL MODEL

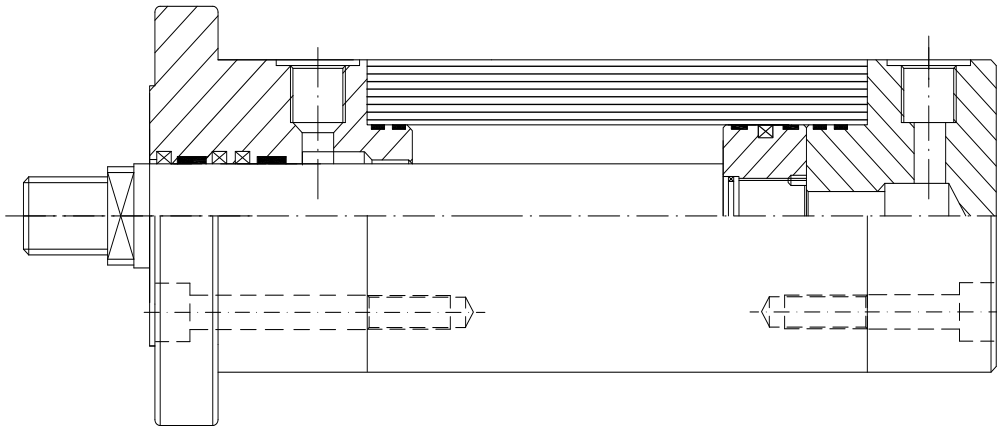
### CHR-E

#### OPCIONES OPTIONS

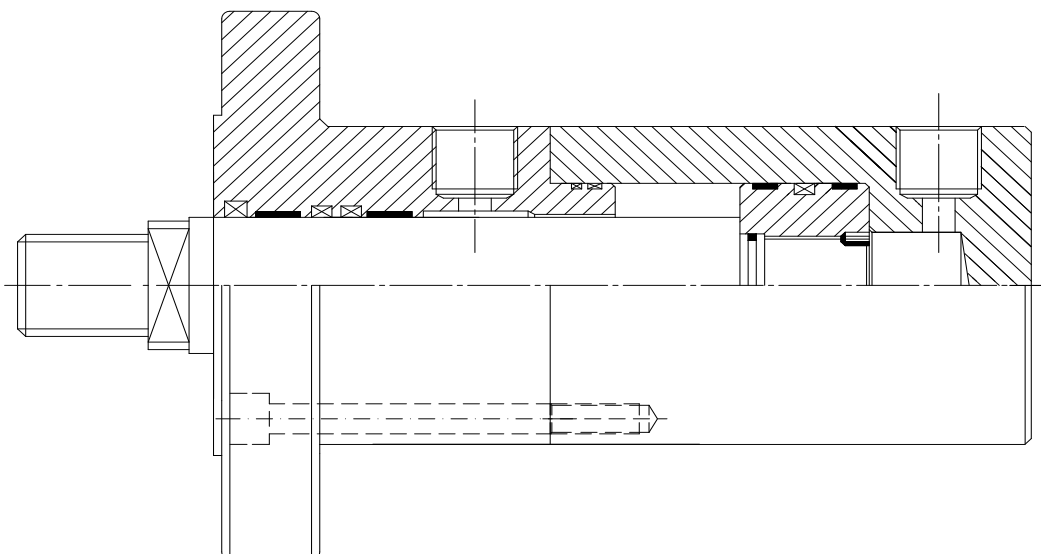
PRESIÓN DE TRABAJO  
WORKING PRESSURE **250 BAR**



- A** Cilindro reforzado provisto de culatas, posterior y anterior, atornilladas a la camisa  
*Reinforced cylinder with front and rear cylinder heads bolted to the sleeve.*



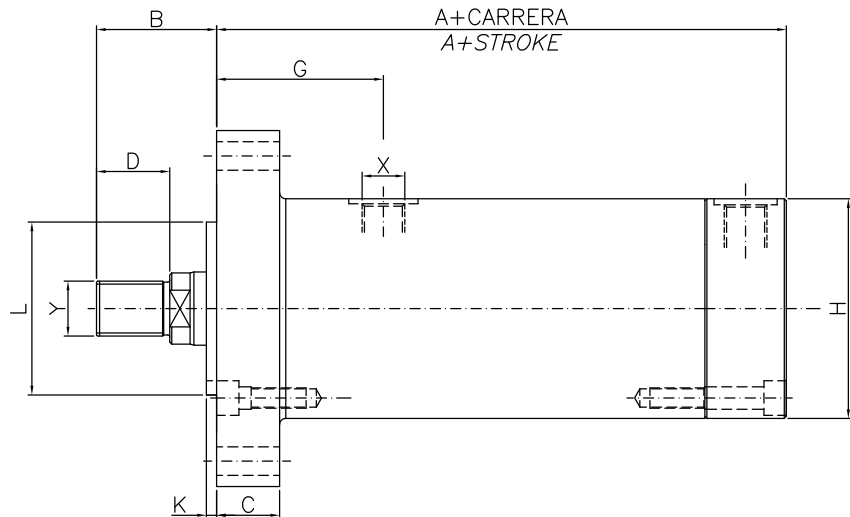
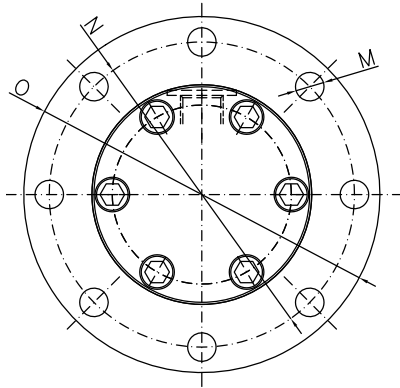
- B** Cilindro reforzado provisto de culata posterior y camisa de una sola pieza, sin soldadura.  
*Reinforced cylinder with a rear cylinder head and sleeve in a single weldless piece.*





**MODELO ESPECIAL REFORZADO**  
**REINFORCED SPECIAL MODEL**

**CHR-E**



TIPO / TYPE CHR-E	X	Y	A	B	C	D	G	H	K	L	M	N	O	
Ø50	28	1/2" G	M20x1,5	213	42	28	28	62	90	4	72	14	132	155
Ø63	36	1/2" G	M27x2	210	59	31	36	82	108	5	85	14	150	175
Ø80	45	3/4" G	M33x2	245	71	35	45	94	132	5	110	18	180	210
Ø100	56	3/4" G	M42x2	256	87	39	56	101	150	6	130	22	212	250
Ø125	70	3/4" G	M48x2	297	98	43	63	113	190	6	175	22	250	290
Ø160	90	1" G	M64x3	304	120	48	85	212	216	5	200	26	315	360

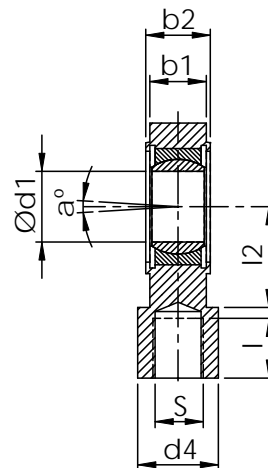
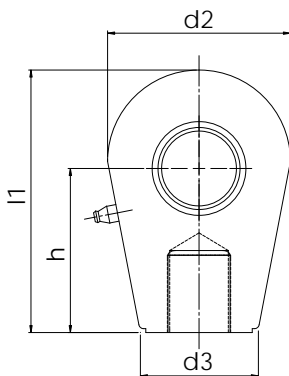
Ø200 110

Consultar con el departamento técnico  
Consult with technical department

\* Otros amarres consultar.

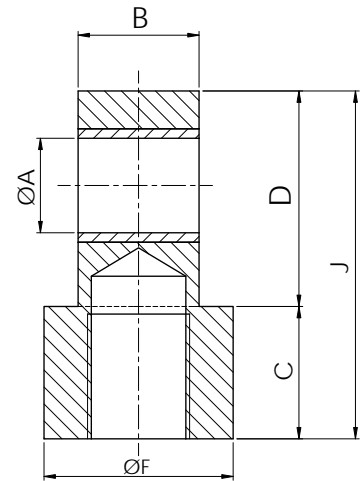
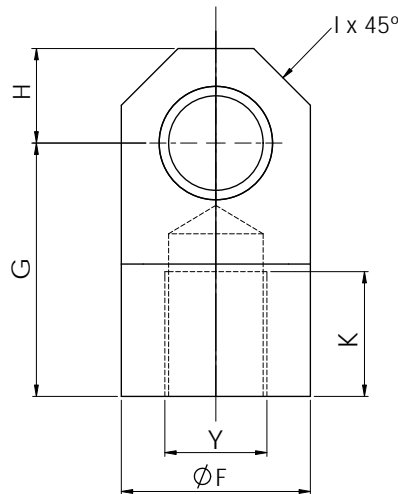
\* Consult another mountings.

## HORQUILLA DELANTERA CON RÓTULA FRONT SPHERICAL EYES CLEVIS



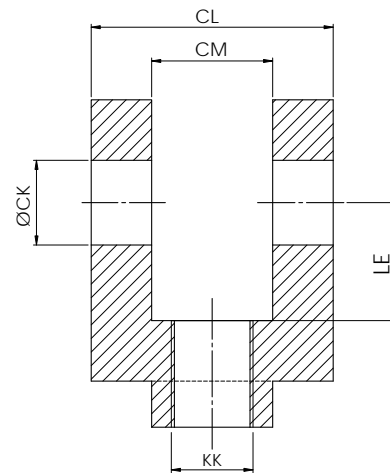
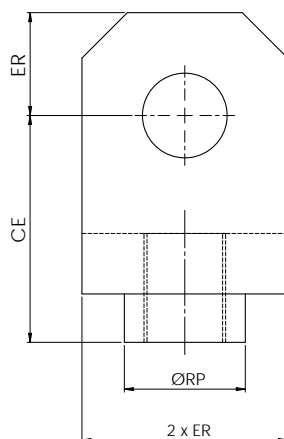
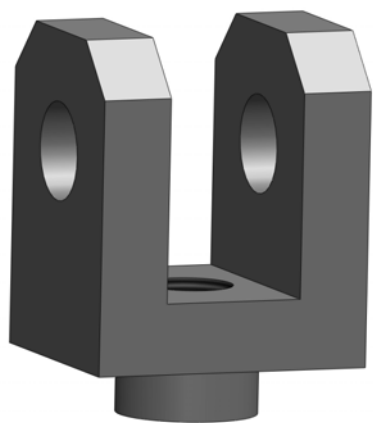
TIPO / TYPE CHR	S	d1	b1	h	l	d2	d3	d4	b2	l1	l2	α°
R-32	M16x1,5	20	16	50	17	56	36	25	19	80	25	9
R-40	M16x1,5	25	20	50	17	56	36	25	23	80	25	7
R-50	M22x1,5	30	22	60	23	64	40	32	28	94	30	6
R-63	M28x1,5	35	25	70	29	78	50	40	30	112	35	6
R-80	M35x1,5	40	28	85	36	94	60	49	35	135	40	7
R-100	M45x1,5	50	35	105	46	116	72	61	40	168	52	6
R-125	M58x1,5	60	44	130	59	130	90	75	50	200	62	6
R-160	M80x2	80	55	170	81	176	120	102	60	265	76	6
R-200A	M110x2 Eje Ø140 Rod	100	70	235	111	230	166	138	70	360	105	7
R-200B	M80x3 Eje Ø110 Rod	100	70	210	111	230	166	138	70	360	105	7
R-250	M120x3	110	70	265	125	265	190	152	80	407	115	6

**ARRASTADOR MACHO MODELO "M"**  
**ROD END PLAIN EYES MODEL "M"**



TIPO / TYPE CHR	Y	A	B	C	D	K	F	G	H	I	J
<b>M-32</b>	M 12x1,25	12	16	16	31	18	26	34	13	6,5	47
<b>M-40</b>	M 16x1,5	16	20	24	41	22	32	49	16	8	65
<b>M-50</b>	M 20x1,5	20	25	28	48	26	40	56	20	10	76
<b>M-63</b>	M 27x2	25	32	35	58	33	50	67	25	15	92
<b>M-80</b>	M 33x2	32	40	44	77	42	64	89	32	17	121
<b>M-100</b>	M 42x2	40	50	54	95	52	80	109	40	20	149
<b>M-125</b>	M 52x2	50	60	58	115	57	100	123	50	27	173
<b>M-160</b>	M 68x3	63	80	75	138	72	126	150	63	35	213
<b>M-200</b>	M 90x3	80	100	95	175	90	160	190	80	45	270
<b>M-250</b>	M 110x3	100	120	115	230	112	200	245	100	55	345

## HORQUILLA DELANTERA MODELO "H" FRONT ROD CLEVIS MODEL "H"

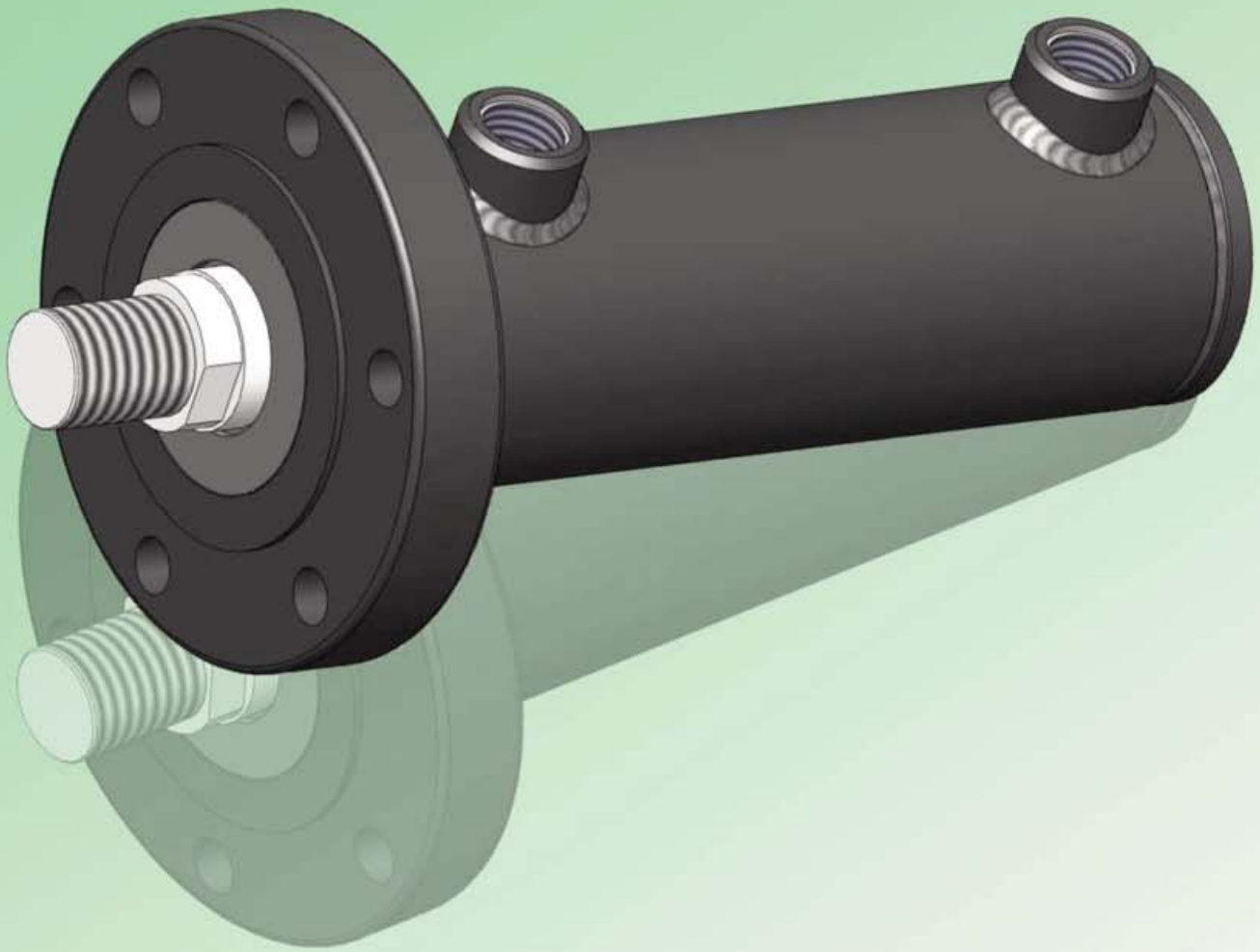


\* En esos casos, la rosca del vástago ha sido adaptada a la norma ISO 8133.

\* In such cases, the thread of the rod is adapted to the ISO 8133 standard.

TIPO / TYPE CHR	KK	CE	CK H9	CL h13	CM A16	ER	LE	RP
H-32	M12x1,25	36	12	32	16	17	19	21
H-40	M16x1,5	54	20	60	30	29	32	32
H-50	M20x1,5	60	20	60	30	29	32	32
H-63	M27x2	75	28	80	40	34	39	40
H-80	M33x2	99	36	100	50	50	54	55
H-100	M42x2	113	45	120	60	53	57	55
H-125	M52x2	126	56	140	70	59	63	75
H-160	M68x3	168	70	160	80	78	83	95
H-200	M80x3	168	70	160	80	78	83	95





## ESPERIA S.A.

c/Arangutxi, 13  
Polígono Industrial de Júndiz  
01015 Vitoria-Gasteiz  
SPAIN  
Tfno: (+34) 945 290 105  
Fax: (+34) 945 290 356  
E-mail: [comercial@esperia.es](mailto:comercial@esperia.es)

Delegación:  
c/Joan Miró, 4 - Local 1  
08912 Badalona (Barcelona)  
SPAIN  
Tfno: (+34) 93 387 12 66  
Fax: (+34) 93 388 15 29  
E-mail: [barcelona@esperia.es](mailto:barcelona@esperia.es)

[www.esperia.es](http://www.esperia.es)